

## **FAQ Contents**

1. [What is the Powerware Extensions for IBM Director product?](#)
2. [How do I obtain a copy of the Powerware Extensions for IBM Director software?](#)
3. [What do I need to run this software? What are the system requirements?](#)
4. [What are the features and benefits of this product?](#)
5. [What does the User Interface look like for this product?](#)
6. [How much does this software cost?](#)
7. [Where can I get more information on this software?](#)

### **1. What is the Powerware Extensions for IBM Director product?**

Powerware Extensions for IBM Director provide seamless integration of Powerware uninterruptible power systems (UPSs) into the Director management system. As a part of Powerware's comprehensive family of power management applications, the Extensions for IBM Director simplify network management tasks for critical elements of server power protection. System administrators can easily monitor, diagnose, configure, set alarms, schedule self-tests, check battery, gather inventory information, and control Powerware UPSs network wide from a single console within IBM Director.

With Powerware Extensions, users can simply double-click the UPSs integrated into the Director interface, and launch Powerware's LanSafe or ConnectUPS SNMP/Web Card applications. All the powerful features and functions of these Powerware award-winning applications are now just a click away through IBM Director.

### **2. How do I obtain a copy of the Powerware Extensions for IBM Director software?**

Powerware Extensions for IBM Director software is available for downloading from Powerware's web site:

<http://www.powerware.com/products/software/downloads.asp>

Select the product you want to download. Fill in your registration information and continue to the actual download area.

After downloading, follow the installation and configuration instructions in the User Guide.

### **3. What do I need to run this software? What are the system requirements?**

IBM Director 3.1 or above must be installed in accordance with IBM requirements and procedures.

#### **Requirements for the Director Server Computer**

- The Director Server computer requires the following:
- Microsoft SNMP Service installed and running.
- Microsoft SNMP Trap Service stopped.
- Microsoft SNMP Trap Service set to Disabled or Manual.
- Configure the computer to discover SNMP devices.
- To monitor LanSafe systems, LanSafe must be installed.

#### **Requirements for the Director Console Computer**

- Microsoft SNMP Service installed and running.
- To monitor LanSafe systems, LanSafe must be installed.

#### **Requirements for LanSafe Systems**

- For LanSafe III, v. 4.17 3a or higher is recommended.
- Configure system to forward SNMP traps to the Director Server.

#### **Requirements for ConnectUPS SNMP/Web Card Systems**

- For the 10Mb ConnectUPS SNMP/Web Card
- For the 100Mb ConnectUPS Web/SNMP Card
- A web browser must be installed on the computer that will monitor and control the UPS.
- For shutting down the computer, install NetWatch Clients 4.01 software available from [www.powerware.com](http://www.powerware.com)

Configure the ConnectUPS-X Web/SNMP card for read/write access and trap forwarding as follows:

1. Set "Write Access Managers" to include the Director Server.
2. Set "Trap Receivers" to include the Director Server.

### **SUPPORTED OPERATING SYSTEMS**

#### **Director Server**

- Microsoft Windows NT 4.0 Server
- Microsoft Windows NT 4.0 Enterprise
- Microsoft Windows 2000 Server
- Microsoft Windows 2000 Advanced Server

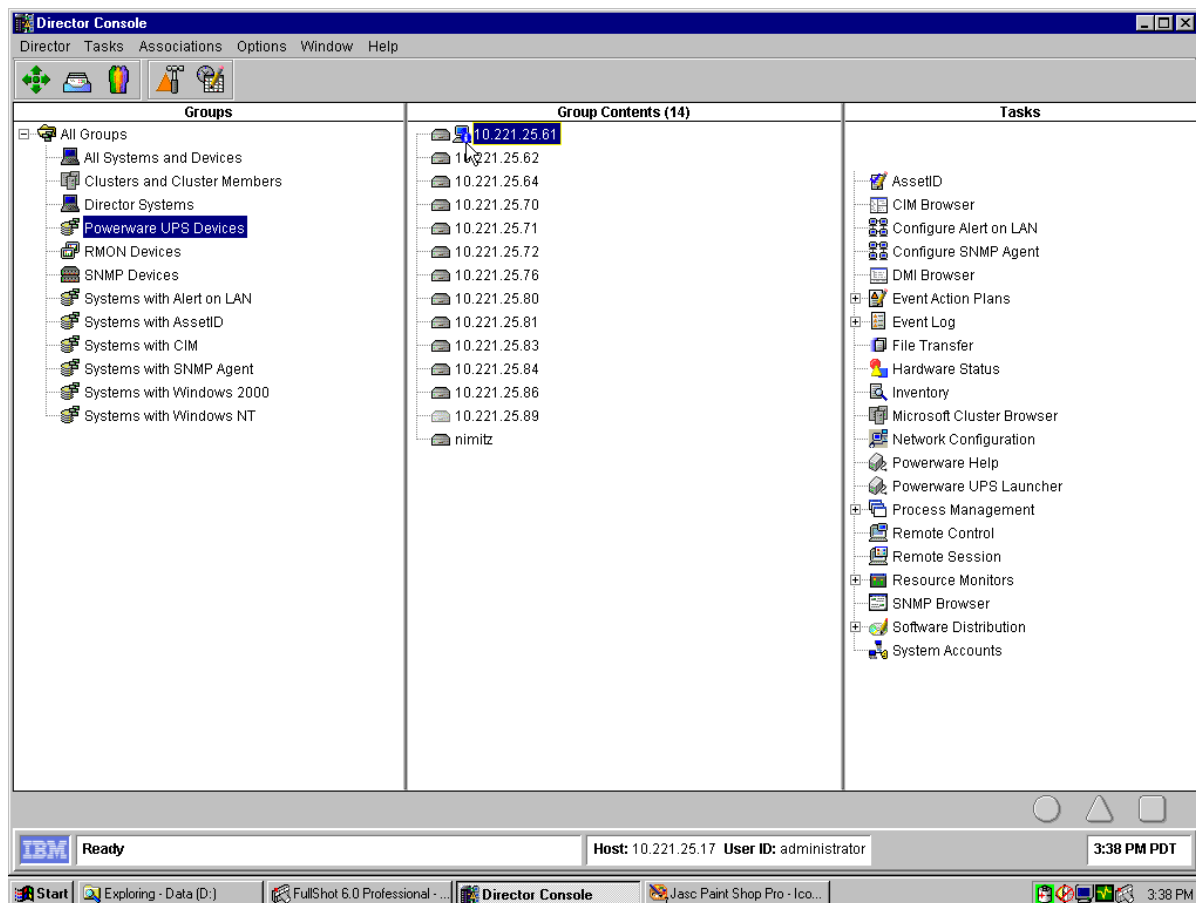
#### **Director Console**

- Microsoft Windows NT 4.0 Server
- Microsoft Windows NT 4.0 Enterprise
- Microsoft Windows NT 4.0 Workstation
- Microsoft Windows 98
- Microsoft Windows 98 SE
- Microsoft Windows XP Professional
- Microsoft Windows 2000 Server
- Microsoft Windows 2000 Professional
- Microsoft Windows 2000 Advanced Server

### 4. What are the features and benefits of this product?

FEATURE	BENEFIT
Seamless integration of UPSs into the IBM Director Management Console	<ul style="list-style-type: none"><li>• Allows administrators to monitor UPSs in the network, in real-time and obtain advance notice on critical elements of server power management, such as UPS battery status, load level, temperature and alarms for battery replacement.</li><li>• Launch LanSafe and SNMP/Web Card UPS applications directly from within Director.</li><li>• Ability to maximize systems availability through the IBM Director user interface.</li></ul>
UPS Inventory management	<ul style="list-style-type: none"><li>• Perform UPS inventory queries network wide.</li><li>• Create customized reports on UPS locations, models, serial numbers, firmware versions, equipment attached to UPSs and other details.</li></ul>
UPS event and alarm management	<ul style="list-style-type: none"><li>• Start programs, send email, messages to pagers, log to file, send to newsgroup, initiate SNMP traps triggered by UPS event changes.</li></ul>
UPS Load Segment Control	<ul style="list-style-type: none"><li>• Control UPS load segments – individual receptacle groups.</li><li>• Increase run time by up to 50% on mission critical loads. Switch different UPS loads on and off at predefined times or power failure situations.</li></ul>
UPS reboot and scheduled shutdown	<ul style="list-style-type: none"><li>• UPSs can be commanded to reboot specific computer systems or internetworking devices either locally or remotely over the network.</li><li>• Initiate scheduled shutdown/reboot tasks with integrated UPS applications.</li></ul>
Network wide UPS battery test	<ul style="list-style-type: none"><li>• Test battery health for all UPSs throughout the network.</li></ul>
Standard RFC1628.MIB and PowerMIB XUPS.MIB support	<ul style="list-style-type: none"><li>• Compatible with the industry standard RFC1628 UPS MIB.</li><li>• In addition a Powerware proprietary XUPS.MIB is provided for extra functionality like e.g. load segment control.</li></ul>
SNMP “GET” and “SET” commands support	<ul style="list-style-type: none"><li>• Control and manage the UPSs on the network via SNMP with the SNMP “GET” and “SET” commands.</li></ul>
SNMP Trap forwarding support	<ul style="list-style-type: none"><li>• Forward SNMP Traps from IBM Director to other Network Management Systems.</li></ul>
Central log for UPS events	<ul style="list-style-type: none"><li>• Log all or only predefined UPS events network wide in a central IBM Director log.</li></ul>
IBM Director Upward Integration	<ul style="list-style-type: none"><li>• Enables Director tools and agents to integrate with Tivoli®, HP OpenView, Microsoft® SMS, CA Unicenter, BMC, NetIQ® and Intel LANDesk® management systems.</li></ul>
IBM Server Proven Certified solution	<ul style="list-style-type: none"><li>• Fulfills IBM Certification criteria.</li><li>• Ensures compatibility with IBM Director solutions.</li></ul>

## 5. What does the user interface look like for this product?



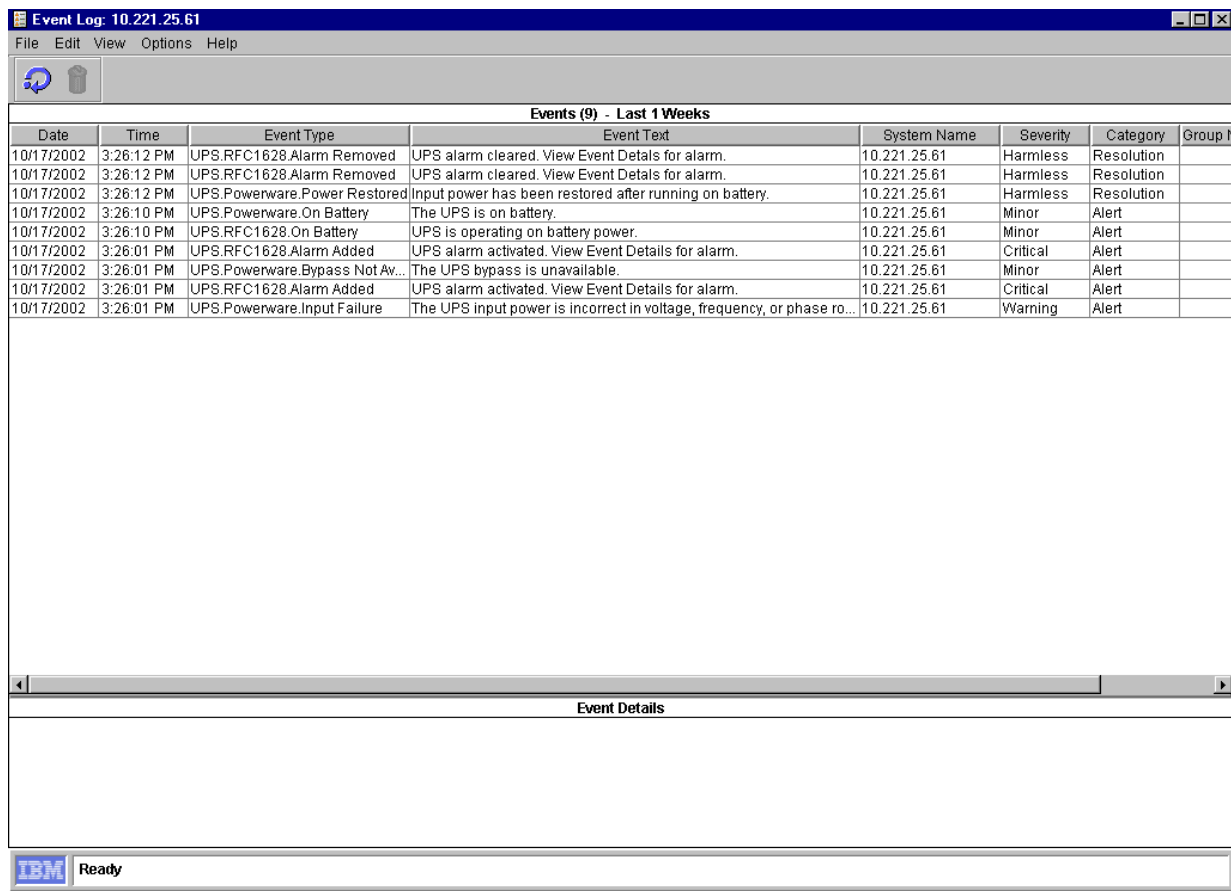
**IBM Director Console with Powerware Extensions installed.**



## Powerware Extensions for IBM Director Frequently Asked Questions (FAQ)

Marcus A. Maxwell, Sr. Software Product Manager

December 18, 2002



The screenshot shows the 'Event Log' window for system 10.221.25.61. It displays a table of events from the last week. The table has columns for Date, Time, Event Type, Event Text, System Name, Severity, Category, and Group. The events listed are related to UPS alarms and power restoration.

Date	Time	Event Type	Event Text	System Name	Severity	Category	Group
10/17/2002	3:26:12 PM	UPS.RFC1628.Alarm Removed	UPS alarm cleared. View Event Details for alarm.	10.221.25.61	Harmless	Resolution	
10/17/2002	3:26:12 PM	UPS.RFC1628.Alarm Removed	UPS alarm cleared. View Event Details for alarm.	10.221.25.61	Harmless	Resolution	
10/17/2002	3:26:12 PM	UPS.Powerware.Power Restored	Input power has been restored after running on battery.	10.221.25.61	Harmless	Resolution	
10/17/2002	3:26:10 PM	UPS.Powerware.On Battery	The UPS is on battery.	10.221.25.61	Minor	Alert	
10/17/2002	3:26:10 PM	UPS.RFC1628.On Battery	UPS is operating on battery power.	10.221.25.61	Minor	Alert	
10/17/2002	3:26:01 PM	UPS.RFC1628.Alarm Added	UPS alarm activated. View Event Details for alarm.	10.221.25.61	Critical	Alert	
10/17/2002	3:26:01 PM	UPS.Powerware.Bypass Not Av...	The UPS bypass is unavailable.	10.221.25.61	Minor	Alert	
10/17/2002	3:26:01 PM	UPS.RFC1628.Alarm Added	UPS alarm activated. View Event Details for alarm.	10.221.25.61	Critical	Alert	
10/17/2002	3:26:01 PM	UPS.Powerware.Input Failure	The UPS input power is incorrect in voltage, frequency, or phase ro...	10.221.25.61	Warning	Alert	

IBM Director Event Log displays events that have occurred on all the UPSs on the network.

### 6. How much does this software cost?

Powerware Extensions for IBM Director is a **free-of-charge** software solution.

### 7. Where can I get more information on this software?

The User Guide for this software is most probably the best source for additional information. It can be easily located on Powerware's web site – software downloads:

<http://www.powerware.com/products/software/downloads.asp>